

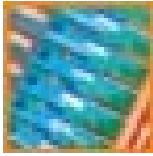
GSMPHONE

Fixed Wireless Phone

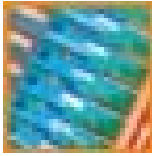


Installation & User Guide

Version 03 – January 2006



Contents	Page
Document Control	
Notices	3
Introduction	
The GSMPhone	4
Getting Started	
Setting up the terminal	5
Location of GSMPhone	6
Powering Up The GSMPhone Phone For The First Time.	6
Menu Functions	
Introduction to Menu functions	7
Message Menus	
Write Messages	8
Inbox	8
Outbox	9
SMS Settings	9
Space	9
Call Log Menus	
Missed Calls	10
Received Calls	10
Dialled calls	11
Call timers	11
Phone Book Menus	
Find	12
Add	12
Erase All	13
Copy All	13
MSISDN	13
Used Space	13
Settings Menus	
Ring	14
Alarm Clock	15
Time & Date	15
Display Set	15
Security Set	16
Reset	16
Set Time	16
Call Services Menus	
Select Network	17
Call Diverts	17
Call Waiting	18
Call Bar	19
Outgoing Unshown	20
Speed Dial	20
Band Select	21
Troubleshooting	22
Technical Specifications	23



Document Control

Date	Doc Version	Change	Authority
April 2005	1	1 st release of document	CH
Dec 2005	2	Added Supplementary Services to manual	CH
Jan 2006	3	Revised manual for new menu layout.	CH

Notices

Emergency Calls

This terminal operates using GSM signals, which cannot guarantee connection in all conditions. Therefore, you should never rely solely on the terminal equipment for essential communications such as medical or emergency services.

No responsibility is assumed by TFM for the use or reliability of the GSMPhone when used in a situation or with other equipment not supplied or specified by TFM.

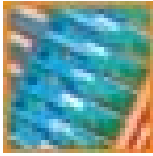
The manufacturer shall accept no liability for any error or damages of any kind resulting from the use of this document or the equipment it relates to.

The GSMPhone is supplied with a 1 year return to base warranty which covers any defects in design or manufacture. No other warranties whatsoever are given.

The wording in this document may change from time to time. Please refer to the TelecomFM web site WWW.telecomfm.co.uk for the latest release.

Regulatory Information

	
<u>Declaration of Conformity</u>	
Applicant	TelecomFM Ltd
Address	895 Plymouth Road Slough, Berkshire, SL1 4LP, U.K.
CE EN60950-1:2001  	



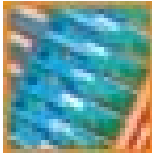
GSMPhone Introduction

Thank you for the purchasing the GSMPhone terminal.

The GSMPhone incorporates:

- LCD Display (1)
- Antenna (2)
- Menu Keys (3)
- Handset (4)
- Alpha Numeric Keys (5)
- Power Connection (6)





Setting up the terminal

Remove the GSMPHONE from the packaging, and proceed as follows:

Warning! To avoid damage do not connect power until you have inserted the SIM and Antenna

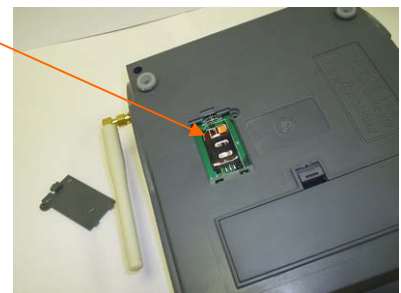
- Attach Antenna
- Attach Handset
- Install the SIM card. (Making sure the PIN lock is deactivated if applicable).
- Install the GSMPhone in preferred location following guidelines.
- Connect Power to the GSMPhone using Power Supply Provided.
- Check Signal Strength
- Make a test call

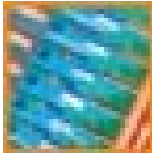
Installing the SIM card

Remove the SIM cover.
Slide back the SIM door and lift it up.

Slide the SIM into the SIM door making sure that the clipped corner of the SIM card lines up with the clipped corner of the SIM Holder.

Close the SIM door.
Slide SIM door to lock the SIM in place.
Then replace SIM cover.



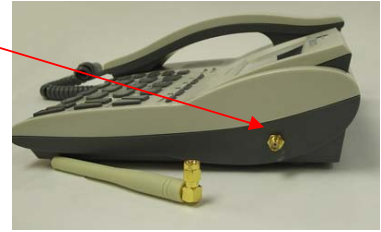


GSMPhone Getting Started



Attaching the Antenna

Screw the antenna to the GSMPhone terminal on the side of the unit.



Attach the Hand-Set

Plug the hand set into the RJ11 connector
On the side of the GSMPhone



Connecting the power Supply

- Connect the power supply unit to the AC outlet.
- Connect the power cord from the power supply unit to the GSMPhone.



Location of GSMPhone

For best reception locate your GSMPhone a minimum of 1 meter from any other sensitive electronic equipment.

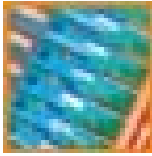
DO NOT locate in direct sun light or near any direct heat source.

Powering Up The GSMPhone For The First Time

Press the power switch on the back of the unit to the on position, the Red power – LED will light up.

The GSMPhone will now carry out an auto test and log onto the GSM network. If successful the following will be displayed on the LCD.

- Network Operator.
- The time and date.
- The signal strength of the network operator.
- The battery level.



Menu Functions

To Enter the Menu Function Press the “Menu” key. The following options can then be selected:

1. Messages
2. Call Log
3. Phone Book
4. Settings
5. Call Service

By selecting the Menu keys and then pressing “Menu” will allow you to scroll through the menus by using the ↑ ↓ directional keys below the LCD screen. Now by selecting one of the menus 1 to 5 above and then pressing the “OK” key will allow you to enter the sub menus of the chosen menu.

1. Messages

1. Write Message
2. Inbox
3. Outbox
4. SMS Setting
5. Space

2. Call Log

1. Missed Calls
2. Received Calls
3. Dialed Calls
4. Call Timers

3. Phone Book

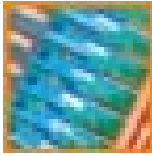
1. Find
2. Add
3. Erase All
4. Copy All
5. MSISDN
6. Used Space

4. Settings

1. Ring
2. Alarm Clock
3. Time and Date
4. Display set
5. Security Set
6. Reset
7. Set Time

5. Call Service

1. Select Network
2. Call Diverts
3. Call Waiting
4. Call Bar
5. Outgoing Unshown
6. Speed Dial
7. Band Select



Menu Option 1 Messages

You can send and receive text messages with the Short Message Service (SMS) using the GSMPhone.

To enter "Message" Press the Menu key and scroll down using the ↑ ↓ directional keys to menu 1 "Message" and press "OK".

The Messages Sub-Menus

1. Write Message
2. Inbox
3. Outbox
4. SMS Setting
5. Space

Write Message

To enter "Write Message" scroll down using the ↑ ↓ directional keys to sub-menu 1 "Write Message" and press "OK".

- Enter your message and press the "OK" key.

You can now select one of the following by scrolling using the ↑ ↓ directional keys:

- **Send:** Press "OK" then enter the recipient's number and press the "OK" key to send the message.
- **Send More:** Press "OK" then select recipient's numbers from the list or phonebook.
- **Common Word (Template):** Press "OK" then select one of the 5 templates messages. Once selected, Press the "OK" key twice to send message to recipient.
- **Save:** Press "OK" to save message.
- **Save and Send:** Press "OK" allows you to send and save messages. Once the setting is made, Press "Back" key or "Exit" key to escape Menus.

Inbox

To enter "Inbox" scroll using the ↑ ↓ directional keys to sub-menu 2 "Inbox" and press "OK".

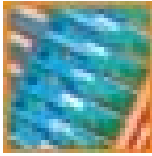
The display will show the number of messages in the Inbox and will give details of the first message stored i.e.

- Whether or not message has been read.
- The time and date of sending.
- Phone number of sender if forwarded.

Scroll using the ↑ ↓ directional keys to select the messages stored.

Once you have selected the required message Press "OK".

Once the message is read, press "OK" and you will now have a menu giving you the following options:



Inbox Cont

- **Answer:** Send a reply to this message.
- **Forward:** forward this message to another.
- **Use Number:** Stores number of message sender on Sim or Phone.
- **Call:** Calls sender of message.
- **Delete:** delete the message.
- **Delete All:** Deletes all messages in the Inbox.

Outbox

To enter "Outbox" scroll using the ↑ ↓ directional keys to sub-menu 3 "Outbox" and press "OK".

The display will show the number of messages in the Outbox and will give details of the first message stored i.e.

- Whether or not message has been sent.
- Phone number of sender
- If stored on SIM or Phone

Scroll using the ↑ ↓ directional keys to select the messages stored.

Once you have selected the required message Press "OK".

Once the message is read, press "OK" and you will now have a menu giving you the following options:

- **Send –** (Allows user to resend this message)
- **Edit -** (re-edit the message and send it)
- **Delete -** delete the message.
- **Delete All:** Deletes all messages in the Inbox.

SMS Setting

To enter "SMS Setting" scroll using the ↑ ↓ directional keys to sub-menu 4 "SMS Setting" and press "OK".

By selecting "SMS Settings", you have the following options when pressing the "OK" key:

- **Valid period:** (The period of time a message should be saved for).
- **Common Word:** (Allows user to edit common word).
- **Service Centre:** (To edit the service Center Number)
- **Status Report:** (Enable or Disable)

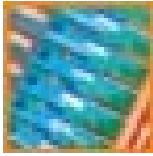
You can request a status report for a sent text message, providing your network provider supports status report services. In the status report you can see if the message has been delivered or not. (allows the user to enable or disable Status Reports).

Once the setting is made, Press "OK" key or "Exit" key to escape Menus.

Space

To enter "Space" scroll using the ↑ ↓ directional keys to sub-menu 5 "Space" and press "OK".

The display will show the number of messages stored from the total available on both the sim and phone. Once read, Press "Back" or "Exit" to escape.



Menu Option 2 - Call Log

Up to 10 stored numbers of missed, received and dialled calls can be stored in the GSMPhone and can be accessed from the Call Log.

To enter "Call Log" Press the Menu key and scroll down using the ↑ ↓ directional keys to menu 2 "Call Log" and press "OK".

The Call Log Sub-Menus

1. Missed Calls
2. Received Calls
3. Dialled Calls
4. Call Timers

Missed Calls

To enter "Missed calls" scroll using the ↑ ↓ directional keys to sub-menu 1 "Missed calls" and press "OK".

The display will show the Missed Calls the GSM phone has received (10 missed numbers can be stored).

You can check each missed Call by scrolling through using the ↑ ↓ directional keys and pressing "OK". To reply, Press "OK" that will give you the following options:

- **Save:** Press "OK" to save to SIM or ME (Phone).
- **Delete:** deletes the Missed Call entry.
- **Call:** Will call the number back.
- **Send Message:** Allows you to reply in a text message.
- **Delete All:** Will delete all Missed Call stored.

Once the setting is made, Press "OK" key or "Exit" key to escape Menus.

Received Calls

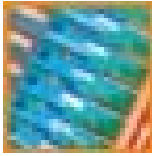
To enter "Received calls" scroll using the ↑ ↓ directional keys to sub-menu 2 "Received calls" and press "OK".

The display will show the Received Calls the GSM phone has received (10 Received numbers can be stored)

You can check each received call by scrolling through using the ↑ ↓ directional keys and pressing "OK". To reply, Press "OK" that will give you the following options:

- **Save:** Press "OK" to save to SIM or ME (Phone).
- **Delete:** deletes the Received Call entry.
- **Call:** Will call the number back.
- **Send Message:** Allows you to reply in a text message.
- **Delete All:** Will delete all Received Call stored.

Once the setting is made, Press "OK" key or "Exit" key to escape Menus.



Call Log cont

Dialled calls

To enter "Dialled calls" scroll using the ↑ ↓ directional keys to sub-menu 3 "Dialled calls" and press "OK".

The display will show the Dialled Calls the GSM phone has dialled (10 dialled numbers can be stored)

You can check each dialled call by scrolling through using the ↑ ↓ directional keys and pressing "OK". To respond Press "OK" that will give you the following options:

- **Save:** Press "OK" to save to SIM or ME (Phone).
- **Delete:** deletes the Dialled Call entry.
- **Call:** Will call the number back.
- **Send Message:** Allows you to reply in a text message.
- **Delete All:** Will delete all Dialled Calls stored.

Once the setting is made, Press "OK" key or "Exit" key to escape Menus.

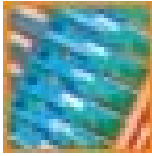
Call Timers

To enter "Call Timers" scroll using the ↑ ↓ directional keys to sub-menu 4 "Call Timers" and press "OK".

By selecting "Call Timers", you have the following options when pressing the "OK" key:

- **Last Call:** Shows the time of the last call made.
- **Received Calls:** Shows the time of all received calls.
- **Dialled Calls:** Shows the time of all dialled calls made.
- **All Calls:** Shows the Call Time for all calls made.
- **Timer Reset:** Allows you to reset all calls logged.

Once the setting is made, Press "OK" key or "Exit" key to escape Menus.



Menu option 3 -Phone Book

You can create your personal phone book by saving information as a contact. In a contact you can save details such as a name and phone number. Up to 100 contacts can be stored on the telephone. Additional contacts can be stored on the Sim card subject to Network SIM used.

To enter "Phone Book" Press the Menu key and scroll down using the ↑ ↓ directional keys to menu 3 "Phone Book" and press "OK".

Phone Book Sub-Menus

1. Find
2. Add
3. Erase All
4. Copy All
5. MSISDN
6. Used Space

Find

To enter "Find" scroll using the ↑ ↓ directional keys to sub-menu 1 "Find" and press "OK".

By selecting "Find" you can select the following option:

Enter the first letter of the contact you wish to find and press "OK".

If the contact shown is not the one you want, press ↑ ↓ until the contact is found.

At this stage by pressing the "Talk/Send" key will call the contact.

Add

To enter "Add" scroll using the ↑ ↓ directional keys to sub-menu 2 "Add" and press "OK".

By selecting "Add", you have the following options when pressing the "OK" key:

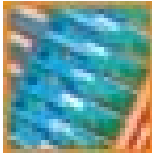
- **SIM**
- **ME**

Select SIM or ME by using the ↑ ↓ keys and then enter the Name by using the Alpha Numeric Keypad. You can add an entry and change the word text by using * and # keys.

When complete press the "OK" key.

Now enter the Contact telephone Number. When Complete press the "OK" key.

When successful you will enter back into the menu "1" Sim" or "2" ME (Phone) to allow for more entries. If you do not wish to Add further entries press the "Back" key to enter sub menus or press "Exit" to escape menus.



Phone Book Cont

Erase All

To enter "Erase All" scroll using the ↑ ↓ directional keys to sub-menu 3 "Erase All" and press "OK".

By selecting "Erase All", you have the following options when pressing the "OK" key. Once selected press the "OK" key twice to confirm option.

- **SIM All:** (This will delete all contact details from the Sim card).
- **ME All:** (This will delete all contacts stored in the GSMPhone).

Copy All

To enter "Copy All" scroll using the ↑ ↓ directional keys to sub-menu 4 "Copy All" and press "OK".

By selecting "Copy All", you have the following options when pressing the "OK" key:

- **From SIM to ME**

The contacts on the SIM card are copied to the contacts on the phone by pressing the "OK" key twice.

- **From ME to SIM**

The contacts on the phone are copied to the contacts on the SIM by pressing the "OK" key twice.

To use the contacts copied, go to the find menu and select the contact stored.

MSISDN MSISDN - Mobile Station International ISDN Number

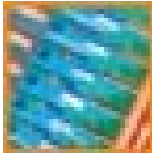
The Mobile Station International ISDN Number is the standard international telephone number used to identify a given subscriber.

To enter "MSISDN" scroll using the ↑ ↓ directional keys to sub-menu 5 "MSISDN" and press "OK".

Used Space

To enter "Used Space" scroll using the ↑ ↓ directional keys to sub-menu 6 "Used Space" and press "OK".

Displays the amount of used and free space on the SIM and Phone



Menu Option 4 – Settings

Allows the user to personalise the Community phone for incoming ringing, time & date, and PIN security.

To enter “Settings” Press the Menu key and scroll down using the ↑ ↓ directional keys to menu 4 “Settings” and press “OK”.

Settings Sub-Menus

1. Ring
2. Alarm Clock
3. Time and date
4. Display set
5. Security set
6. Reset
7. Set time

Ring

To enter “Ring” scroll using the ↑ ↓ directional keys to sub-menu 1 “Ring” and press “OK”.

By selecting “Ring”, you have the following options when pressing the “OK” key:

- **Select Ring**
- **Volume**

By selecting “Select Ring”, you have the following options when pressing the “OK” key. Once selected press the “OK” key to enter option.

- **Call Ring:** by using the ↑ ↓ keys you can select 20 different incoming ring tones.

Once selected press the “OK” key to except option.

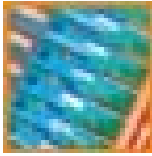
- **Msg Ring:** by using the ↑ ↓ keys you can select 3 different incoming message tones.

Once selected press the “OK” key to except option.

By selecting “Volume”, you have the following options when pressing the “OK” key. Once selected press the “OK” key to enter option.

- **Call Ring:** use the ← → keys to adjust level of incoming Ring volume.
- **Msg Ring:** use the ← → keys to adjust level of incoming Msg volume.
- **Speaker volume:** use the ← → keys to adjust level of Speaker volume.
- **Key tone:** use the ← → keys to adjust level of Key tone volume.

Once selected press the “OK” key to except option.



Settings Cont

Alarm Clock

To enter "Alarm Clock" scroll using the ↑ ↓ directional keys to sub-menu 2 "Alarm Clock" and press "OK".

You can select the following options by using the ↑ ↓ directional keys:

- **Alarm Clock 1**
- **Alarm Clock 2**

When set, the display will show a symbol of a clock. To turn off an alarm once ringing, press the "Exit" key.

By selecting "Alarm Clock 1", you have the following options when pressing the "OK" key. Once selected press the "OK" key to enter option.

- **Open:** allows you to set a daily Alarm in Hours & Minutes.
- **Closed:** cancels Alarms set.
- **Mode:** allows you to set day of week alarms by scrolling using the ↑ ↓ keys and pressing "OK" key to set on (√) or (□) off. Press the Back or Exit key to exit the Mode menu.
- **Ring:** by using the ↑ ↓ keys you can select 20 different ring tones.

By selecting "Alarm Clock 2" you have the following options when pressing the "OK" key. Once selected press the "OK" key to enter option.

- **Open:** allows you to set a daily Alarm in Hours & Minutes.
- **Closed:** cancels Alarms set.
- **Mode:** allows you to set day of week alarms by scrolling using the ↑ ↓ keys and pressing "OK" key to set on (√) or (□) off. Press the Back or Exit key to exit the Mode menu.
- **Ring:** by using the ↑ ↓ keys you can select 20 different ring tones.

Time & Date

To enter "Time & Date" scroll using the ↑ ↓ directional keys to sub-menu 3 "Time & Date" and press "OK".

By selecting Time & date, you have the following options when pressing the "OK" key. Once selected press the "OK" key to enter option.

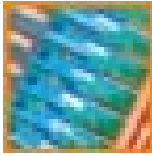
- **Set Time:** allows you to set the time in Hours & Minutes.
 - **Set Date:** allows you to set the date in year, month, day format.
- Once the setting is made, Press "OK" key or "Exit" key to escape Menus.

Display Set

To enter "Display set" scroll using the ↑ ↓ directional keys to sub-menu 4 "Display Set" and press "OK".

By selecting "Display set", you have the following options when pressing the "OK" key. Once selected press the "OK" key to enter option.

- **Back Light:**
- **Contrast:**



Settings Cont

By selecting "Back Light", you have the following options when pressing the "OK" key. Once selected press the "OK" key to except option.

- **Open forever:** Leaves the back light on continuously.
- **30s to 5s:** sets the amount of time in seconds the back light stays on.
- **Closed:** back light will never come on.

Once you have made the setting, Press "Back" or "Exit" key.

By selecting "Contrast" you can adjust the following option by using the ← → directional keys: Once selected press the "OK" key to enter option.

- **20 (dark) to 60 (Light):** allows you to adjust the level of Contrast.
- Once the setting is made, Press "OK" key or "Exit" key to escape Menus.

Security Set

The Security setting allows you to lock the SIM card from unauthorized use. If a PIN is entered incorrectly three times in a row, the SIM will become blocked and will require the assistance of your Network operator.

To enter "Security set" scroll using the ↑ ↓ directional keys to sub-menu 5 "Security Set" and press "OK".

By selecting "PIN", you have the following options when pressing the "OK" key. Once selected press the "OK" key to enter option.

- **Open:** will ask you to enter a 4 to 8 digit PIN.
- **Modify:** this will allow you to modify your PIN.
- **Close:** this will turn the PIN off.

Once the setting is made, Press "OK" key or "Exit" key to escape Menus.

Reset

To enter "Reset" scroll using the ↑ ↓ directional keys to sub-menu 6 "Reset" and press "OK".

By selecting "Reset", you will have the following option when pressing the "OK" key. Once selected press the "OK" key to enter option.

- Pressing OK will reset all parameters back to the factory default settings.

Warning: By choosing to reset, it will delete all contacts and text messages stored on the GSMPhone.

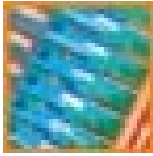
Set Time

To enter "set time" scroll using the ↑ ↓ directional keys to sub-menu 7 "set time" and press "OK".

By selecting "set time", you will have the following option when pressing the "OK" key. Once selected press the "OK" key to enter option.

- allows you to enter the time in hours & minutes.

Once the setting is made, Press "OK" key or "Exit" key to escape Menus.



Menu Option 5 – Call Services

The network can be selected either manually or automatically. To select the desired method, Press the Menu “5 Call Service”

To enter “Call services” Press the Menu key and scroll down using the ↑ ↓ directional keys to menu 5 “Call Services” and press “OK”.

The Call Service Sub-Menus

1. Select Network
2. Call diverts
3. Call waiting
4. Call bar
5. Outgoing unshown
6. Speed dial
7. Band Select

Select Network

When you turn on your GSMPhone, it searches for the last accessed network. If this is not within range, you may use another network, provided your home network has an agreement that allows you to do so. (This is called roaming).

To enter “Select Network” scroll using the ↑ ↓ directional keys to sub-menu 1 “Select Network” and press “OK”.

By selecting “select network”, you will have the following option when pressing the “OK” key. Once selected press the “OK” key to enter option.

- **Auto:** The GSMPhone will automatically search for the preferred Network.
 - **Manual:** Will allow you to manually select a network from a list.
- Once the setting is made, Press “OK” key or “Exit” key to escape Menus.

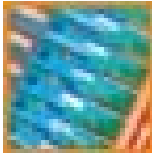
Call Diverts

You can use the Divert calls service to divert incoming calls to another phone number when you are enabled to answer.

To enter “Call Diverts” scroll using the ↑ ↓ directional keys to sub-menu 2 “Call Diverts” and press “OK”.

By selecting “call diverts”, you will have the following option when pressing the “OK” key. Once selected press the “OK” key to enter option.

- CFU:
- When Busy:
- No Answer:
- Not reachable:
- Cancel All:



Call Diverts cont

By selecting "CFU", (Call forward unconditionally) you will have the following option when pressing the "OK" key. Once selected press the "OK" key to enter option.

- **Open:** Will ask you to enter phone number. Press the "OK" key and enter the number that you wish to divert too.
 - **Close:** this will cancel the divert set.
 - **Query status:** will show you the status of the diverted call.
- Once the setting is made, Press "OK" key or "Exit" key to escape Menus.

By selecting "when busy", you will have the following option when pressing the "OK" key. Once selected press the "OK" key to enter option.

- **Open:** Will ask you to enter phone number. Press the "OK" key and enter the number that you wish to divert too.
 - **Close:** this will cancel the divert set.
 - **Query status:** will show you the status of the diverted call.
- Once the setting is made, Press "OK" key or "Exit" key to escape Menus.

By selecting "No answer", you will have the following option when pressing the "OK" key. Once selected press the "OK" key to enter option.

- **Open:** Will ask you to enter phone number. Press the "OK" key and enter the number that you wish to divert too.
 - **Close:** this will cancel the divert set.
 - **Query status:** will show you the status of the diverted call.
- Once the setting is made, Press "OK" key or "Exit" key to escape Menus.

By selecting "not reachable", you will have the following option when pressing the "OK" key. Once selected press the "OK" key to enter option.

- **Open:** Will ask you to enter phone number. Press the "OK" key and enter the number that you wish to divert too.
 - **Close:** this will cancel the divert set.
 - **Query status:** will show you the status of the diverted call.
- Once the setting is made, Press "OK" key or "Exit" key to escape Menus.

By selecting "cancel", you will have the following option:

- To cancel all diverted calls.

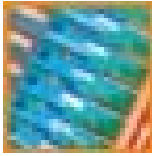
Call waiting

Enables you to receive a second call while another call is in progress

To enter "Call waiting" scroll using the ↑ ↓ directional keys to sub-menu 3 "Call waiting" and press "OK".

By selecting "call waiting", you will have the following option when pressing the "OK" key. Once selected press the "OK" key to enter option.

- **Open:** Will turn on the call waiting service. (Network dependant)
 - **Close:** this will cancel the call waiting service.
 - **Query status:** will show you the status of the call waiting service.
- Once the setting is made, Press "OK" key or "Exit" key to escape Menus.



Call Bar

You can use the Call Bar service to restrict certain types of calls that can be made or received. You will require a password, which comes with your subscription from your network operator to be able to use this service.

To enter "Call bar" scroll using the \uparrow \downarrow directional keys to sub-menu 4 "Call bar" and press "OK".

By selecting "call bar", you will have the following option when pressing the "OK" key. Once selected press the "OK" key to enter option.

- **BAOC:** (Bar all outgoing calls)
- **BAIC:** (Bar all incoming calls)
- **BICROAM:** (Bar incoming calls when roaming outside the home Country)
- **BOIC:** (Bar outgoing International calls)
- **BOIC EXHC:** (Bar outgoing International calls except to home Country)
- **Cancel All:** (Cancel all)

By selecting "BAOC", you will have the following option when pressing the "OK" key. Once selected press the "OK" key to enter option.

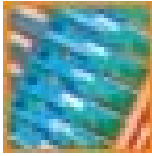
- **Open:** Will connect to the Network and ask you to enter the network password given to you by the Network operator. "Success"
 - **Close:** Will ask you to enter the network password given to you by the Network operator. "No registered"
 - **Query status:** will show you the status of the barring.
- Once the setting is made, Press "OK" key or "Exit" key to escape Menus.

By selecting "BAIC", you will have the following option when pressing the "OK" key. Once selected press the "OK" key to enter option.

- **Open:** Will connect to the Network and ask you to enter the network password given to you by the Network operator. "Success"
 - **Close:** Will ask you to enter the network password given to you by the Network operator. "No registered"
 - **Query status:** will show you the status of the barring.
- Once the setting is made, Press "OK" key or "Exit" key to escape Menus.

By selecting "BICROAM", you will have the following option when pressing the "OK" key. Once selected press the "OK" key to enter option.

- **Open:** Will connect to the Network and ask you to enter the network password given to you by the Network operator. "Success"
 - **Close:** Will ask you to enter the network password given to you by the Network operator. "No registered"
 - **Query status:** will show you the status of the barring.
- Once the setting is made, Press "OK" key or "Exit" key to escape Menus.



Call Bar Cont

By selecting "BOIC", you will have the following option when pressing the "OK" key. Once selected press the "OK" key to enter option.

- **Open:** Will connect to the Network and ask you to enter the network password given to you by the Network operator. "Success"
 - **Close:** Will ask you to enter the network password given to you by the Network operator. "No registered"
 - **Query status:** will show you the status of the barring.
- Once the setting is made, Press "OK" key or "Exit" key to escape Menus.

By selecting "BOIC EXHC", you will have the following option when pressing the "OK" key. Once selected press the "OK" key to enter option.

- **Open:** Will connect to the Network and ask you to enter the network password given to you by the Network operator. "Success"
 - **Close:** Will ask you to enter the network password given to you by the Network operator. "No registered"
 - **Query status:** will show you the status of the barring.
- Once the setting is made, Press "OK" key or "Exit" key to escape Menus.

By selecting "Cancel All", you will have the following option when pressing the "OK" key.

- The display will show Network connect and will prompt you to enter the network password in the box given to you by your Network operator. If successful you will see "Success" displayed.

Outgoing Unshown

To enter "outgoing unshown" scroll using the ↑ ↓ directional keys to sub-menu 5 "outgoing unshown" and press "OK".

By selecting "Outgoing Unshown", you will have the following option when pressing the "OK" key. Once selected press the "OK" key to enter option.

- **Query status:** Press "OK" that will connect to the network and display if CLIR is provisioned.
- Once you have confirmed the setting, either press "Back" or "Exit".

Speed Dial

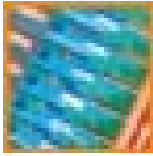
Speed dial allows you to store 8 frequently used numbers, which can be access by holding down the number key that it as been stored under.
(Keys 2 to 9)

To enter "speed dial" scroll using the ↑ ↓ directional keys to sub-menu 6 "speed dial" and press "OK".

By selecting "speed dial", you will have the following option when pressing the "OK" key. Once selected press the "OK" key to enter option.

- **1 2 (blank):** Press the "OK" key twice and enter the number you wish to store then press "OK".

You can either enter more stored numbers by following the last step, or press Back or Exit to escape.



Band select

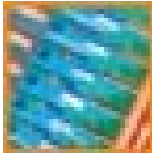
This allows you to select a Bandwidth for the Network operator that you are using.

To enter "Band Select" scroll using the ↑ ↓ directional keys to sub-menu 6 "Band Select" and press "OK".

By selecting "band select", you will have the following option when pressing the "OK" key. Once selected press the "OK" key to enter option.

- 900MHz
- 1800MHz
- 900/1800MHz
- 1900MHz

Once the setting is made, Press "OK" key or "Exit" key to escape Menus.



Troubleshooting

You may encounter problems while using the GSMPhone that maybe easily resolve by yourself, or by contacting your service provider.

No Power:

- Check that it is connected to the mains supply.

Will not run on Batteries back up:

- Check that batteries have been fully charged. It is recommended that you leave the GSMPhone to charge for a minimum of 3 hours before use.

Cannot make any calls:

- Make sure the SIM is live on the Network, and there is sufficient credit on your SIM.

Cannot receive calls:

- Make sure the volume is not turned down or off, and you do not have any diverts set on the GSMPhone.

Interference when making calls:

- Make sure that you are not too close to other electronic devices, try moving the GSMPhone to another location.

No SIM message:

- There is no SIM card inserted or SIM not correctly fitted.

PIN Error:

- The PIN entered is the wrong PIN number.

Invalid network SIM

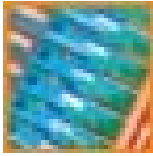
- The SIM is not recognised by the Network provider. Contact your service provider.

No service:

- There is no Network or you are not within range of the received signal.

Cannot access a certain Function:

- The function or service may be dependant on your SIM card or your chosen Network. An example of this could be "SS" (Supplementary Services) for Call Barring. Please check with your Network Provider.



Technical Specifications

GSM Interface

- Bands E-GSM 900 / 1800 / 1900 MHz
- Power Consumption Class 4 (2W) at 900MHz Class 1 (1W) at 1800MHz
- Input Dynamic Range 62dB
- Sensitivity < -104dBm
- Max Freq. Deviation ± 0.1 ppm
- Phase Error < 5° RMS

Technical Overview

- Operating Voltage AC 110 - 240 V, 50 / 60Hz
- Battery Rechargeable 3.6V 1300mAh NiMH
- Operating Temp. -10°C to +45°C
- Relative Humidity 10 - 95 %

Features Overview

- Send and Receive SMS Messages
- Caller ID
- Handset and Handsfree Operation
- Displays date and time and has built in Alarm function
- Stores Missed Calls, Dialed and Received Numbers
- Multiple Ringtones
- Phone Book stores up to 100 names and numbers
- Operates from Mains or Battery